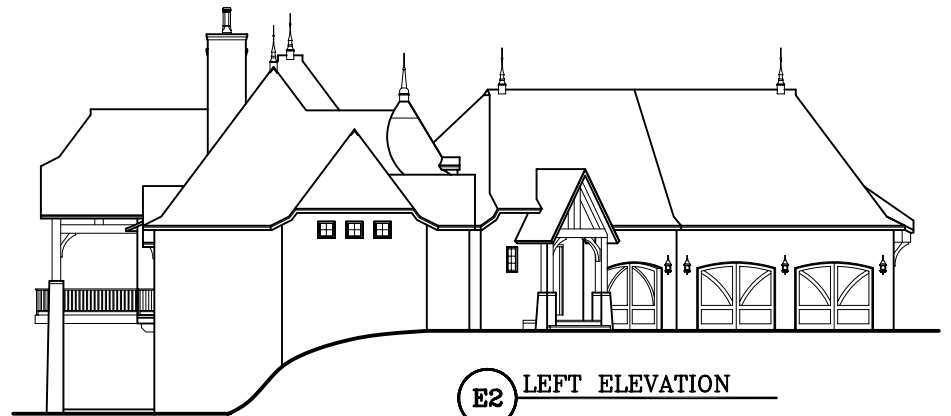


Jean d'Arc 1



E1 FRONT ELEVATION



E2 LEFT ELEVATION



E3 REAR ELEVATION

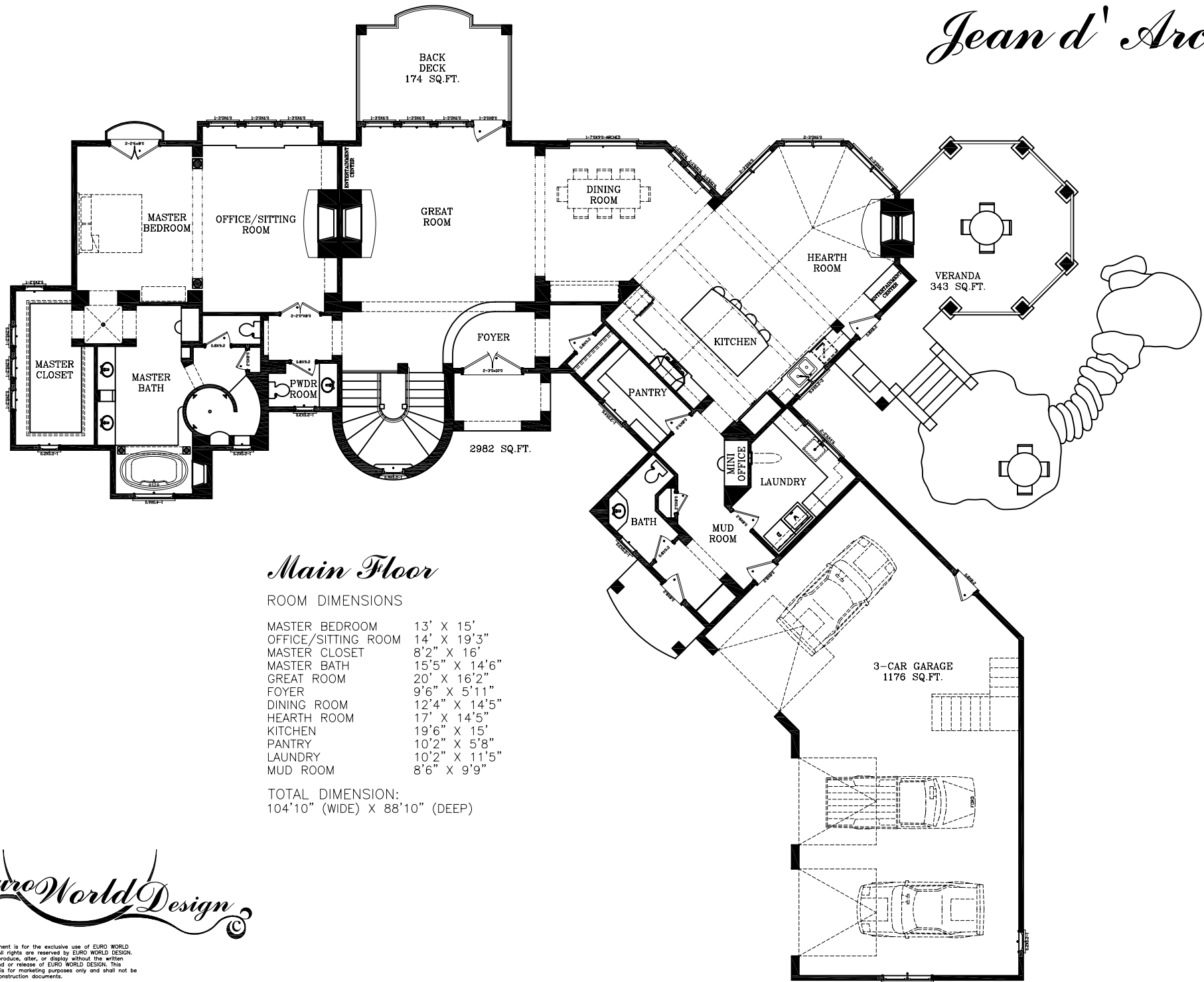


E4 RIGHT ELEVATION

EuroWorldDesign

This document is for the exclusive use of EURO WORLD DESIGN. All rights are reserved by EURO WORLD DESIGN. Do not reproduce, alter, or display without the written consent and/or release of EURO WORLD DESIGN. This document is for marketing purposes only and shall not be used as construction documents.

Jean d' Arc 1



Main Floor

ROOM DIMENSIONS

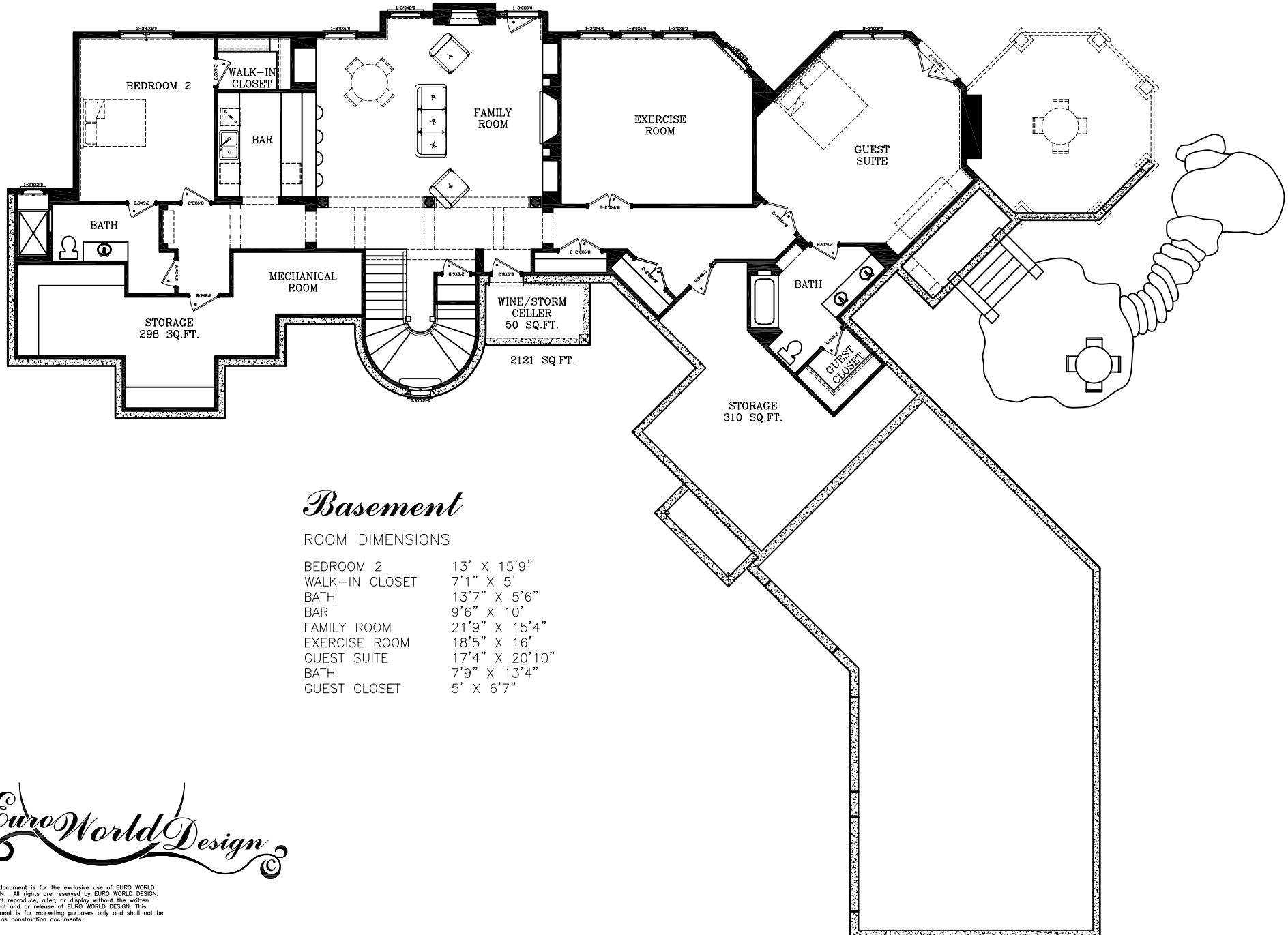
MASTER BEDROOM	13' X 15'
OFFICE/SITTING ROOM	14' X 19'3"
MASTER CLOSET	8'2" X 16'
MASTER BATH	15'5" X 14'6"
GREAT ROOM	20' X 16'2"
FOYER	9'6" X 5'11"
DINING ROOM	12'4" X 14'5"
HEARTH ROOM	17' X 14'5"
KITCHEN	19'6" X 15'
PANTRY	10'2" X 5'8"
LAUNDRY	10'2" X 11'5"
MUD ROOM	8'6" X 9'9"

TOTAL DIMENSION:
104'10" (WIDE) X 88'10" (DEEP)

EuroWorldDesign

This document is for the exclusive use of EURO WORLD DESIGN. All rights are reserved by EURO WORLD DESIGN. Do not reproduce, alter, or display without the written consent and or release of EURO WORLD DESIGN. This document is for marketing purposes only and shall not be used as construction documents.

Jean d'Arc 1



Basement

ROOM DIMENSIONS

BEDROOM 2	13' X 15'9"
WALK-IN CLOSET	7'1" X 5'
BATH	13'7" X 5'6"
BAR	9'6" X 10'
FAMILY ROOM	21'9" X 15'4"
EXERCISE ROOM	18'5" X 16'
GUEST SUITE	17'4" X 20'10"
BATH	7'9" X 13'4"
GUEST CLOSET	5' X 6'7"

EuroWorldDesign

This document is for the exclusive use of EURO WORLD DESIGN. All rights are reserved by EURO WORLD DESIGN. Do not reproduce, alter, or display without the written consent and or release of EURO WORLD DESIGN. This document is for marketing purposes only and shall not be used as construction documents.