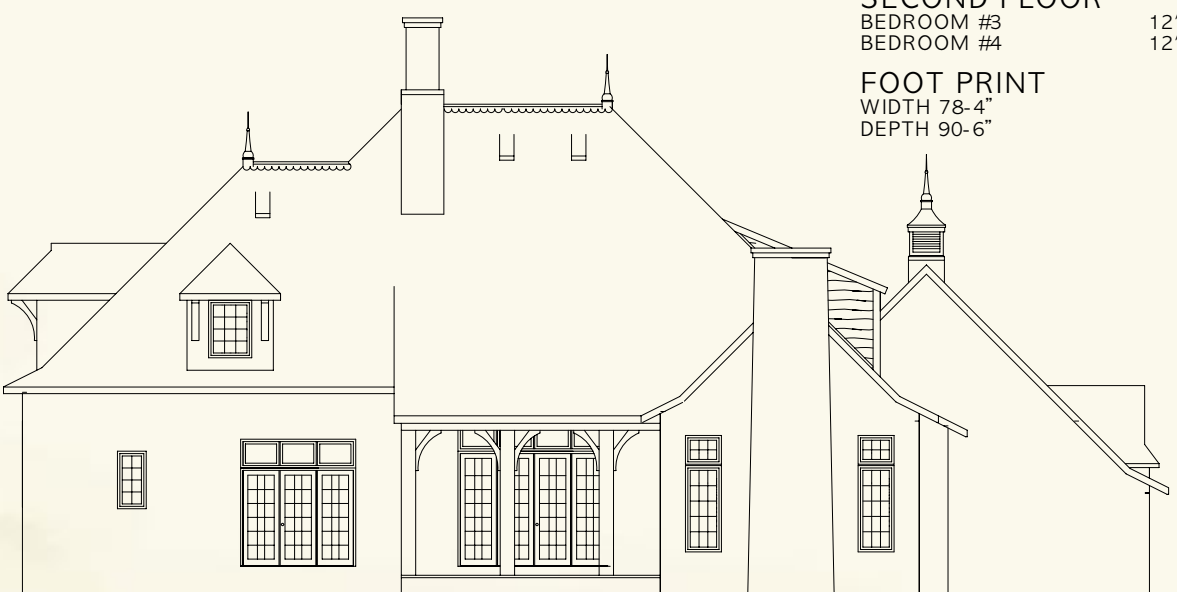




# Honfleur

2676 SQ.FT. MAIN  
721 SQ.FT. SECOND FLOOR

PLAN PRICE  
\$1698.50 WITH CRAWL SPACE



<b>FIRST FLOOR</b>	
FOYER	9'-5" X 11'-0"
LIVING ROOM	17'-6" X 21'-8"
KITCHEN	17'-3" X 13'-3"
DINING ROOM	13'-10" X 12'-8"
HEARTH ROOM	17'-5" X 12'-8"
BREAKFAST ROOM	16'-2" X 8'-8"
MASTER BEDROOM	14'-4" X 16'-10"
MASTER BATH	11'-5" X 16'-10"
MASTER CLOSET	9'-8" X 9'-9"
BEDROOM #2	11'-8" X 14'-11"
<b>NON-CLIMATE CONTROLLED SPACE</b>	
GARAGE	24'-11" X 36'-2"
VERANDA	17'-8" X 9'-8"
FRONT ENTRY	9'-2" X 6'-0"
<b>SECOND FLOOR</b>	
BEDROOM #3	12'-6" X 9'-7"
BEDROOM #4	12'-6" X 9'-7"
<b>FOOT PRINT</b>	
WIDTH	78'-4"
DEPTH	90'-6"

